

# South West Regional Improvement and Efficiency Programme February 2009 Update



## Focusing funding to respond to local and regional needs

In the light of the recession Members have agreed to re-focus the priorities, funding and activity of the SW RIEP. The RIEP will now focus on six core areas, in place of the previous fifteen, accounting for over 80% of the RIEP's funding (see opposite).

Key priorities for the RIEP in supporting authorities to combat the effects of the recession over the next twelve months, include:

- Provision of affordable housing
- Reducing unemployment
- Supporting job provision
- Providing effective citizen advice.

Therefore, an additional £900k of funding is being reallocated to support authorities through the *Sustainable Economy* workstream.

Many authorities are embarked on large service transformation projects to increase performance and deliver efficiency savings. £800k additional support for tools and capacity in this area will be channelled through the *Corporate Capacity* workstream.

*Innovation* funding will also be doubled to £900k to support the six focus areas with a priority on collaboration, LAA priorities and community impact.

The RIEP is still committed to supporting *Driving Value for Money* alongside improving performance on *Social Care* in Adult Services and responding to the safeguarding agenda for Children's Services.

Members of the South West Council's Business Committee agreed, if it builds upon previous good results of the RIEP then *"This refocused programme should deliver well-targeted and substantial efficiencies within the South West"*.

Julian Morley, Director, SW RIEP

Julian.Morley@SWCouncils.gov.uk, 07917 264370

Innovative

Collaborative

Difficult

### i. Corporate Capacity

£ 8.6M

Shamala.Govindasamy@SWCouncils.gov.uk

### ii. Driving Value for Money

£ 2M

Gillian.Brindle@SWCouncils.gov.uk

### iii. Sustainable Economy

£ 2M

Sue.Smith@SWCouncils.gov.uk

### iv. Social Care

£ 4.9M

Shoba.Manro@SWCouncils.gov.uk

### v. Fire and Rescue

£ 325k

Graham.Saunders@avonfire.gov.uk

### vi. Innovation Fund

£ 900k

Gillian.Brindle@SWCouncils.gov.uk

**Total £18.7M**

## Governance and Accountability

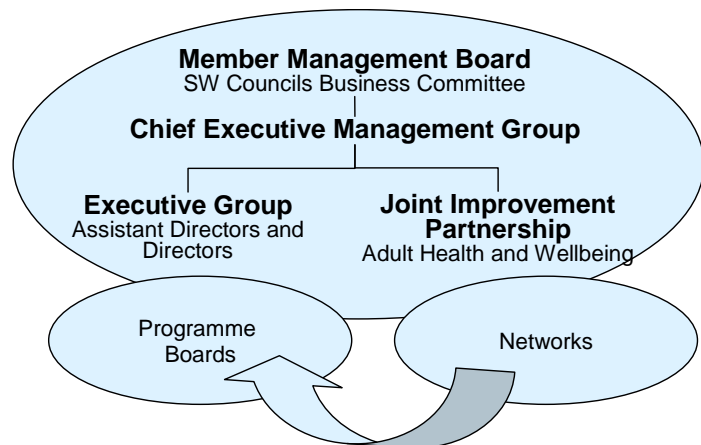
The SW RIEP is led by elected Members through the SW Council's Business Committee, supported by the Chief Executive Management Group. They set the strategic direction for the RIEP and review progress on delivery.

The SW RIEP also now has a Champion from each of the four main political groups:

- **Cllr Christine Channon, Devon CC, Conservative**  
Deputy Chair, SW Councils
- **Cllr Alan Connett, Teignbridge DC, Lib Dem**  
Deputy Chair, SW Councils
- **Cllr Roger Hutchinson, South Gloucestershire Council, Labour**  
Chair, SW Councils
- **Cllr Ray Frost, Teignbridge DC, Independent**  
SW Councils, overall RIEP Member Champion

The Executive Group and the SW Joint Improvement Partnership (for Adult Services) provide operational expertise, guidance and challenge.

Each workstream, and a number of network groups, are supported by Programme Boards, often involving elected Members as "Champions".



## Chief Executive Management Group

Area	Name	Organisation
Elected Member	Cllr Ray Frost (Independent)	South West Councils
Police Services	Matthew Bennion-Pedley	Wiltshire Police
Fire & Rescue	Darran Gunter - CFO	Dorset FRS
SW SHA	Becky Pollard	SW Strategic Health Authority
SW RDA	Tony Bray	SW Regional Development Agency
Cornwall	Kevin Lavery - CEx	One Cornwall
Devon	Carole Burgoyne	Plymouth City
	Phil Norrey - CEx	Devon County
Dorset	Liz Goodall - CEx	North Dorset District
	David Jenkins - CEx <b>Chair</b>	Dorset County
Gloucestershire	Andrew North - CEx	Cheltenham Borough
	Peter Bungard - CEx	Gloucestershire County
Somerset	Alan Jones - CEx	Somerset County
	Philip Dolan - CEx	South Somerset District
West of England	Jan Ormondroyd	Bristol City
	Amanda Deeks - CEx	South Gloucestershire
	Graham Turner - CEx	North Somerset
Wiltshire	Keith Robinson - CEx	Wiltshire County
	Gavin Jones - CEx	Swindon Borough
Chair Exec Group	Caroline Taylor - Director	Torbay Council
South West	Bill Sanderson - Hd Ops	Audit Commission
	Imelda Richardson – Reg Dir	CSCI
	Richard Sheard – Dir	Government Office SW
	Bryony Houlden – CEx	SW Councils
	Stephen Fletcher	IDeA / SW RIEP
	Julian Morley – Dir	SW RIEP

## Based on its strong track record, the South West RIEP has re-allocated significant funding to support authorities to combat the local effects of the recession.

The partnership already has a strong record of helping authorities and other public bodies deliver innovative solutions to complex challenges, and recently the team have re-visited priorities in light of the economic downturn.

Cllr Roger Hutchinson:

*“here in the South West, the RIEP is led by Elected Members through South West Councils, we are ensuring that the RIEP work delivers on the core agenda for local authorities.” He added;*

*“This is important because not only do we need to respond to the economic challenges of the day, but we also need to be looking to the future. The South West’s population has grown faster than any other region over the last twenty years, and Government is proposing significant on-going growth. We need to ensure this is effectively delivered; the infrastructure that we need is put in place; and the RIEP work is well positioned to support that delivery.”*

## How is the SW RIEP responding to changing economic events the region?

Our economic survey of South West authorities in October 2008 showed that affordable housing, unemployment, job provision and combating the effects of the recession are all top priorities. Providing effective citizen advice and driving good value for money were also highlighted as key areas.

Using the survey results and other evidence gathered directly, the RIEP is reallocating around £1m of funding.

Cllr Ray Frost commented:

*“SW RIEP already had a Local Economy workstream, but it has to be responsive to changing needs. By taking the initiative and re-balancing our priorities in the light of the economic recession, this additional funding means that more support will be provided for authorities where it is needed most, such as supporting the delivery of affordable housing.”*

## What confidence can authorities and members have that the SW RIEP will be able to deliver on this support during the recession?

The approach of the SW RIEP is built upon the strong foundations of previous regional working. This has allowed funding to be allocated to priority areas and on to authorities very quickly; 90% of the £7.74m 2008/09 funding was released by July with the remaining released in September 2008. Focus on the “right things” is provided by the priority workstreams, from Adult Services to Climate Change, each helping expert officers, Members and relevant agencies to commission and deliver sector-led programmes at ground level.

One particular priority is to improve the health and well-being of the elderly. Support has been commissioned for the personalisation agenda, workforce development, peer support and “commissioning”. This is in addition to a “fair pricing tool” that helps authorities challenge the price of high-cost residential care homes, an area where the RIEP has already helped authorities in the region save over £4m in the last two years.

Those who have used the tool have been impressed:

*“care managers find it a brilliant tool. It helps us to ensure that money is spent appropriately.”* (A social worker in Learning Disability placements at Wiltshire County Council.)

Procurement is another area where the RIEP has already been active. Over 36 authorities have been supported through an online process where the price of goods and services are “bid” down, rather than up, by providers. Described by some as a sort of “ebay in reverse”, the participating authorities have made over £1m in savings.

A senior procurement officer at Bristol City Council who has used the online tool said,

*“we’d definitely do it again. It makes sense because you achieve better prices. It is very worthwhile.”*

The RIEPs procurement activity has delivered over £7m in savings for the region over the last two years and expects further savings of over £30m.

## How to get involved, or find out more

You can get involved in the development and commissioning of the various support programmes, or make use of the support available, by contacting the programme managers (see email addresses below), or by calling South West Councils on 01823 270101.

Details are also available via [www.swcouncils.gov.uk](http://www.swcouncils.gov.uk), and following the link to the SW RIEP, or by going directly to [www.southwestiep.gov.uk](http://www.southwestiep.gov.uk).

**Home**  
About Us  
Other Regional Centres  
Contact Us  
Programmes  
News  
Events  
Skills Development  
Case Studies  
Useful Links  
Members area

**Quick Picks**  
Programme Summary - includes information on new activities and funding opportunities  
Mapping of South West Waste Sites  
Member Development Toolkit

**Recent Case Studies**  
Somerset Virtual Unitary Authority for the Collection of Waste  
Recycling in Cambridgeshire and Peterborough (RECAP)  
Bristol City Urban Consolidation Project

**Top 3 Downloads**  
SW RIEP Regional Strategy  
Waste Services Newsletter - January 2008  
Managing Successful Programmes Course (MSP) Agenda v1

The South West Regional Improvement and efficiency Partnership (SW RIEP) was set up by authorities in June 2006 as a "hub" to drive innovation and progress against regional priorities and to share information and knowledge in conjunction with other public sector bodies and support agencies. Previously known as LIFT SW", it has a good track record supporting authorities to deliver change in the region.

The national network of nine RIEPs work closely to minimise duplication and all are funded by central government, which means that much of the support available is provided free of charge. The SW RIEP will receive £23m between 2008/09 and 2010/11, subject to performance.

The SW RIEP supports authorities and other public bodies through fifteen workstreams. These programmes vary from bespoke support for authorities or services in difficulty, through regional programmes of support to pump-priming for innovative or collaborative projects - click here for details of new activities and funding opportunities.

Pump-priming of innovation and collaboration

Regional leadership where required, and coordination of support

Peer challenge and on-site support

Skills development in new areas

Examples of good practice, benchmarking, access to experience

Access to frameworks and national programmes

### i. Corporate Capacity

Local Strategic Partnerships and LAA/MAAs  
Business Transformation and Overall Improvement

Plus

Tackling Exclusion and Promoting Equality  
Stronger Communities and Safer Communities

Shamala.Govindasamy@SWCouncils.gov.uk

### ii. Driving Value for Money

Smarter Procurement, Property Construction

Plus Asset Management

Gillian.Brindle@SWCouncils.gov.uk

### iii. Sustainable Economy

Local Economy and Housing

Plus Climate Change and Waste Services

Sue.Smith@SWCouncils.gov.uk

### iv. Social Care

Adult Health and Wellbeing and Children and Young People

Shoba.Manro@SWCouncils.gov.uk

### v. Fire and Rescue

Graham.Saunders@avonfire.gov.uk

### vi. Innovation Fund

Gillian.Brindle@SWCouncils.gov.uk

## Local Strategic Partnerships and Local Area Agreements (LAAs)

**Indicative overall funding of £1.4M (5.6%) for CSR07, including £600k in the first year 2008/09**

This workstream was launched in July 08 and is aimed providing local authorities (and their partners) easy access to the skills and knowledge required to put together and performance manage effective LAAs. The workstream also supports innovation and knowledge sharing around the *operation* of LSPs - particularly when these are in line with priorities emerging from the 16 LAAs signed off in June 2008.

### Key support available from this workstream includes:

1. Stock-take of LSP strengths and needs
2. Outputs from research and analysis, including protocols, templates, newsletters, case studies, example documents, etc.
3. LAA events and networks
4. Support for LSP outcome-based delivery planning
5. Funded support for innovation and priorities
6. Funded secondments
7. Targeted support for LSPs
8. Pre-CAA peer challenge
9. Funding for Multi-Area Partnerships

Contact Claire Tovey ([Claire.Tovey@SWCouncils.gov.uk](mailto:Claire.Tovey@SWCouncils.gov.uk)) or Jayne Erskine ([Jayne.Erskine@gosw.gsi.gov.uk](mailto:Jayne.Erskine@gosw.gsi.gov.uk)), or visit the SW RIEP website for further details.

## Business Transformation

**Indicative overall funding of £1.278M (5.1%), for CSR07, including £478k in 2008/09**

This workstream was launched in July 08 as a 3-year support programme covering both improvement and efficiency. It provides change management capacity, leadership on new ways of thinking and working, and depth and breadth of delivery expertise across the region through the provision of grants, guidance, training, peer networking and advisory support.

### Key support available from this workstream includes:

1. Peer network for officers and members involved with change
2. On-site advisory support
3. Guidance, tools, case studies and “what’s happening” newsletter
4. Subsidised (and on-site) skills development programme
5. Funding for innovation and partnerships (especially two-tier)
6. Best practice maturity benchmark programme (as part of our national RIEP lead work)

The SW RIEP has a national co-ordinating role across all RIEPs nationally for this area of work.

Contact Shamala Govindasamy ([Shamala.Govindasamy@SWCouncils.gov.uk](mailto:Shamala.Govindasamy@SWCouncils.gov.uk)) or Emma Dunford ([Emma.Dunford@SWCouncils.gov.uk](mailto:Emma.Dunford@SWCouncils.gov.uk)), or visit the SW RIEP website for further details.

## Tackling Exclusion and Promoting Equality

**Indicative overall funding of £300k (1.2%) for CSR07, including £100k in the first year 2008/09**

The key objective of this workstream is to ensure that all authorities achieve Level 3 of the Local Government Equalities Standard. The workstream was launched in July 08 and also aims to help authorities meet their LAA priority targets around equality and diversity.

**Key support available from this workstream includes:**

1. Consultancy or equivalent support for authorities at level 1 of the standard to put in place an action plan for achievement to level 2 and 3.
2. External support in advance of external validation to level 3.
3. Support for lead LSP's to help conduct equality impact assessments
4. Equalities skills development programme
5. Best practice/dissemination of knowledge
6. Leadership programme

*Contact Paul Clarke (Paul.Clarke@idea.gov.uk) or Stephen Fletcher (Stephen.Fletcher@idea.gov.uk), or visit the SW RIEP website for further details.*

## Overall Improvement

**Indicative overall funding of £5.8M (24.5%) for CSR07, including £2.9M in the first year 2008/09**

This workstream was launched in July 08 to support authorities in difficulty to have improvement plans and improvement boards in place and to provide a review capacity for implementation.

The workstream is also aimed at ensuring that the corporate capability of all authorities to improve the operation and management of their organisations is increased

**Key support available from this workstream includes:**

*For authorities in difficulty:*

1. Mechanism to fund, support, monitor and scrutinise improvement plans.
2. Best practice dissemination and knowledge sharing programme for authorities in difficulty through networks and communities of practices

*For authorities not in difficulty:*

3. Capacity support programme
4. Overview and scrutiny support programme
5. Mechanism to support existing general improvement programmes:
  - Peer support mentoring and peer peer Reviews
  - Leadership Academy and Fast Track places.
  - Places on NGDP and Academy for Executive Leadership.
  - Places on the BTEC level 3 and 4
6. Leadership development programme

*Contact Paul Clarke (Paul.clarke@idea.gov.uk) or Stephen Fletcher (Stephen.Fletcher@idea.gov.uk), or visit the SW RIEP website for further details.*

## Stronger Communities

**Indicative overall funding of £300k (1.2%) for CSR07, including £100k in the first year 2008/09**

This stream of work, launched in September 08, concentrates on helping Councils to achieve the Stronger Communities agenda and in particular the legislative changes following the recent 'Empowerment White Paper'. The workstream will focus for the first year on developing the empowerment concept and then focus on community cohesion and its role in strong communities as the work on LAAs progresses.

### Key support available from this workstream includes:

1. Help for local authorities to participate in the SW Councils reputation campaign
2. Support to improve communication and access to information
3. Training and development package for officers and members
4. Spread knowledge and best practice – networking and events
5. Support programme for community empowerment
6. Support package for working with 3rd sector and promoting volunteering.
7. Toolkit of support for local authorities to attract high quality councillors

*Contact Paul Clarke (Paul.Clarke@idea.gov.uk) or Stephen Fletcher (Stephen.Fletcher@idea.gov.uk), or visit the SW RIEP website for further details.*

## Safer Communities

### Funding to be confirmed

This workstream is under development in partnership with the Home Office, the GOSW and Crime and Disorder Reduction Partnerships in the region. The initial focus is on youth re-offending.

*Contact Claire Tovey (Claire.Tovey@SWCouncils.gov.uk) or Jayne Erskine (Jayne.Erskine@gosw.gsi.gov.uk), or visit the SW RIEP website for further details.*

## Asset Management

**Indicative overall funding of £300k (1.2%) for CSR07, including £100k in the first year 2008/09**

The aim of this workstream is to give Local Authorities' property asset and service managers better access to good practice information and support the delivery community asset transfers. It will also ensure a better alignment of asset management planning with corporate objectives, service priorities and CAA / LAA priorities. Launched in September 08.

### Key support available from this workstream includes:

1. Toolkit, case study materials and workshops around office rationalisation and co-location projects
2. A toolkit for improving Community Engagement
3. Good practice guidance and recommendations for Community Asset Transfers and Community Ownership
4. Workshops with Members and senior managers around linking asset management to corporate objectives
5. Workshops with partner organisations around the link to CAA/LAA objectives
6. Introduction of common Asset Management standards and policies; shared approaches to information and performance management
7. Good practice assessment and support (including Peer Reviews) using RICS guidance (see RICS Public Sector Asset Management Guidelines)

The SW RIEP has a national co-ordinating role across all RIEPs nationally for this area of work.

Contact Simon Foster ([Simon.Foster@SWCouncils.gov.uk](mailto:Simon.Foster@SWCouncils.gov.uk)), or visit the SW RIEP website for further details.

## Property Construction

**Indicative overall funding of £540k (2.5%) for CSR07, including £257k in the first year 2008/09**

Authorities in the region also have a large capital spend on property construction over the next three to four years of over £500m pa, but because of the South West's geography any leverage is dispersed. With the help of a number of authorities and the RIEP, Devon County Council is hosting a contractor framework which will maximise authorities' leverage and allow sharing of resource and expertise.

### Key support available from this workstream includes:

1. The procurement, implementation and management of a construction framework
2. Support for local authorities / framework partners to implement / pilot innovative or collaborative waste reduction / emissions activities
3. Support for local authorities / framework partners to implement / pilot innovative or collaborative construction training
4. Whole-life property costing model and on-line database (an online database for construction cost and performance is already available)

There is also a focus on sustainable procurement, the third sector and economic development.

Contact Simon Foster ([Simon.Foster@SWCouncils.gov.uk](mailto:Simon.Foster@SWCouncils.gov.uk)), or visit the SW RIEP website for further details.

## Smarter Procurement

***Indicative overall funding of £1.485M (6%), for CSR07, including £538k in the first year 2008/09***

This is a three year programme starting in July 08 covering both improvement and efficiency in the South West procurement sector. The proposed budget is anticipated to yield cashable savings of at least £20m over 5 years from the start of the programme. The programme also includes elements to support Local Authorities with procurement technology and to build the capacity of officers operating in the sector. The workstream will also co-ordinate with the national RIEP programme of activity in procurement.

### **Key support available from this workstream includes:**

1. Regional capacity programme to deliver collaborative procurement projects in specific high value categories
2. Support for technological capacity including eAuctions, spend analysis, pCards and a South West contract and opportunities portal
3. Skills development programme to build capacity within the procurement sector
4. Support programme to help local authorities implement low level collaborative procurement projects with other local authorities and public sector organisations
5. Smarter procurement communications programme (including the Districts Procurement Forum)

There is also a focus on sustainable procurement and also the third sector.

*Contact Gillian Brindle (Gillian.Brindle@SWCouncils.gov.uk) or Claire Morecroft (C.Morecroft@Dorsetcc.gov.uk), or visit the SW RIEP website for further details.*

## Local Economy

**Indicative overall funding of £900k (3.6%) for CSR07, including, including £200k in the first year 2008/09**

This workstream is a three year improvement programme aimed at supporting Local Authorities to undertake their current priorities and responsibilities in relation to Economic Development and Regeneration activities. The programme will also help authorities fully contribute to changes which may emerge as a result of the Sub National Review of Economic Development and Regeneration and expected Planning Act for 2008.

### Key support available from this workstream includes:

1. Skills and capacity development: creation of a pool of experts, capacity needs analysis, skills programme
2. Performance improvement: programme of peer reviews, events and seminars
3. Undertaking new responsibilities and new ways of working, including support for: new models of sub-regional working, Economic Assessment Duty, managing complex partnership projects, difficult planning decisions, developing major infrastructure, participating in the regional funding process, developing Local Transport Plans, bringing a support role around providing affordable housing and highways customer benchmarking

*Contact Sue Smith (Sue.Smith@SWCouncils.gov.uk) or Matt Steel (Matt.Steel@SWCouncils.gov.uk), or visit the SW RIEP website for further details.*

## Housing

### Funding to be confirmed

This workstream is under development and will be launched in April 2009

*Contact Sue Smith (Sue.Smith@SWCouncils.gov.uk), visit the SW RIEP website for further details.*

## Climate Change

**Indicative overall funding of £90k with £270k from other sources (1.4%), for 2008/09, £360k total for CSR07**

Launched in September 08, this is a three year programme covering support and capacity needs for Local Authorities in addressing their leadership, strategic and delivery roles in tackling climate change. The budget will focus in particular on sharing understanding and expertise to address some of the most difficult issues.

The programme will also support Local Authorities in the South West to deliver improvements in their National Indicators related to climate change.

### **Key support available from this workstream includes:**

1. Support with leadership models including self assessment tools and guidance
2. Support for professional and best practice networks, improved knowledge and skills
3. Support for the development and use of carbon accounting tools
4. Support for improving communication and priorities to and between authorities and communities

The SW RIEP has a national role across all RIEPs for this area of work.

*Contact Helen Elliott (Helen.Elliott@SWCouncils.gov.uk) or visit the SW RIEP website for further details.*

## Waste Services

**Indicative overall funding of £558k (2.2%), for CSR07, including, including £93k in the first year 2008/09**

Launched in July 08, the waste management programme is a three year programme covering both improvement and efficiency needs in the waste sector. The proposed budget is anticipated to yield cashable savings of at least £7m over 5 years from the start of the programme. The programme also includes elements to help Local Authorities achieve LAA priority outcomes and build the capacity of their officers and members operating in the sector.

### **Key support available from this workstream includes:**

1. Waste communications and coordination
2. Business transformation support to assist local authorities produce feasibility studies, business cases, service design or implementation plans.
3. Support to help local authorities implement/pilot innovative or collaborative waste services activities in partnership with other authorities or the private sector.
4. Skills development training programme to build capacity within the waste sector (both at officer and Member level)

*Contact Helen Elliott (Helen.Elliott@SWCouncils.gov.uk) or visit the SW RIEP website for further details.*

## Children and Young People

**Indicative overall funding of £1.44M (5.8%) for CSR07, including £360k in the first year 2008/09**

Launched in July 2008 this programme will help authorities deliver improved outcomes for children against a background of pressure on Children's Services budgets.

Key areas include safeguarding, supporting improvement, delivering efficiency savings through better commissioning, procurement, and joint working.

The programme has been developed by senior authority officers in the South West and is also linked strongly to the improvement activities of the Government Office (GOSW) and its local Field Force, DCFS and a number of other support agencies including IDeA.

### Key support available from this workstream includes:

1. Enhanced support for capacity building
2. Support for Commissioning Process and Practice; Events, Courses, Action Learning Sets, Commissioning Framework and Tools
3. Continuing Development of Finance and Independent Sector Data; Data book, Toolkit, Provider Directory and Placement Directory
4. Improvement and Efficiency Projects; portfolio of projects, tenders and frameworks
5. Joint Provision with Health for youngsters with severe behavioural as well as mental health difficulties

Contact John Lees ([j.lees@dorsetcc.gov.uk](mailto:j.lees@dorsetcc.gov.uk)) or Maire Holmes ([Maire.Holmes@SWCouncils.gov.uk](mailto:Maire.Holmes@SWCouncils.gov.uk)), or visit the SW RIEP website for further details.

## Adult Health and Wellbeing

**Indicative overall funding of £3.42M, plus £1.62M from other sources (20.2%) for CSR07, including £950k in the first year 2008/09**

This is a three year programme covers both improvement and efficiency needs in the adult social care sector. The budget will cashable savings of at least £20 million over 3 years from the start of the programme. The programme also includes capacity building and services in difficulty, but the main focus is on supporting Local Authorities achieve LAA priority outcomes related to adult social care. The workstream is fully integrated across CSIP, CSED, IDeA and the SW RIEP to provide a one-stop of support for authorities.

### Key support available from this workstream includes:

1. Improvement work with individual "1 Star" authorities
2. Regional improvement approaches, including Social Care Governance, Safeguarding and performance data benchmarking
3. Support on workforce planning and staff development, including pathways between Social Care and NHS
4. Development of leadership capability across sector including accredited training programmes
5. Development and support for elected Members
6. Support "Putting People First" transformation of Social Care - Prevention and wider systems transformation, care pathways integration & support & collaboration on commissioning practices in addressing the "Personalisation" agenda region-wide.
7. Regional capacity and support in commissioning for regional networks, programmes of learning sets and seminars/ events
8. Accelerate change through consultancy support, specialist infrastructure projects and tools
9. Joint work and networking across region including links with housing providers and commissioners

Contact Helen Maunder ([h.maunder@dorsetcc.gov.uk](mailto:h.maunder@dorsetcc.gov.uk)) or Shoba Manro ([Shoba.Manro@SWCouncils.gov.uk](mailto:Shoba.Manro@SWCouncils.gov.uk)), or visit the SW RIEP website for further details.

Note – funding figures will be updated March 09

## Fire and Rescue

**Indicative overall funding of £324k (1.3%), for CSR07, including £108k in the first year 2008/09**

The fire and rescue programme is a three year programme covering both the efficiency and improvement needs of the sector, and launched in July 2008. The programme complements the existing programme of collaboration between Fire and Rescue Services in the South West (SWFRS).

### **Key support available from this workstream includes:**

1. Benchmarking Programme - expanded regional benchmarking programme, including a full range of benefits metrics
2. Equality and Diversity Programme – all FRAs will be able to use ES@T software, peer reviews and attitudes survey
3. Lessons for SWFRS from the 2008 local area agreement round – Consultants report and follow-up support.
4. Procurement and maintenance of vehicles and other equipment – options appraisal/out line business case.
5. Operation polices – set up a regional team and evaluate effectiveness over one year
6. Regional information and learning portal – scope, develop, market and train staff to use it.
7. There is scope to add other projects to the programme for completion in 2009-10 and 2010-11

The SW RIEP has a national co-ordinating role across all RIEPs nationally for this area of work.

*Contact Graham Saunders (Graham.Saunders@avonfire.gov.uk), or visit the SW RIEP website for further details.*

## Innovation Fund

**Indicative overall funding of 450k (1.8%) for CSR07, including £75k in the first year 2008/09**

Launched in July 2008, this programme consists of an annual bidding process for local authorities to submit funding requests for small scale, innovative, and collaborative improvement and efficiency projects. Projects will need to focus on achieving: Local Area Agreement (LAA) priority outcomes, National Indicator 179 (value for money), or raising up authorities/services in difficulty.

### **Key support available from this workstream includes:**

1. Funding Mechanism
2. Grant allocation and support
3. Communications programme

*Contact David Bowater (David.Bowater@SWCouncils.gov.uk), or visit the SW RIEP website for further details.*